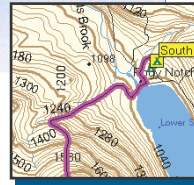
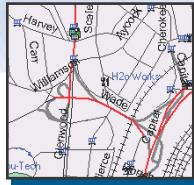
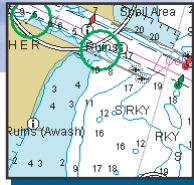




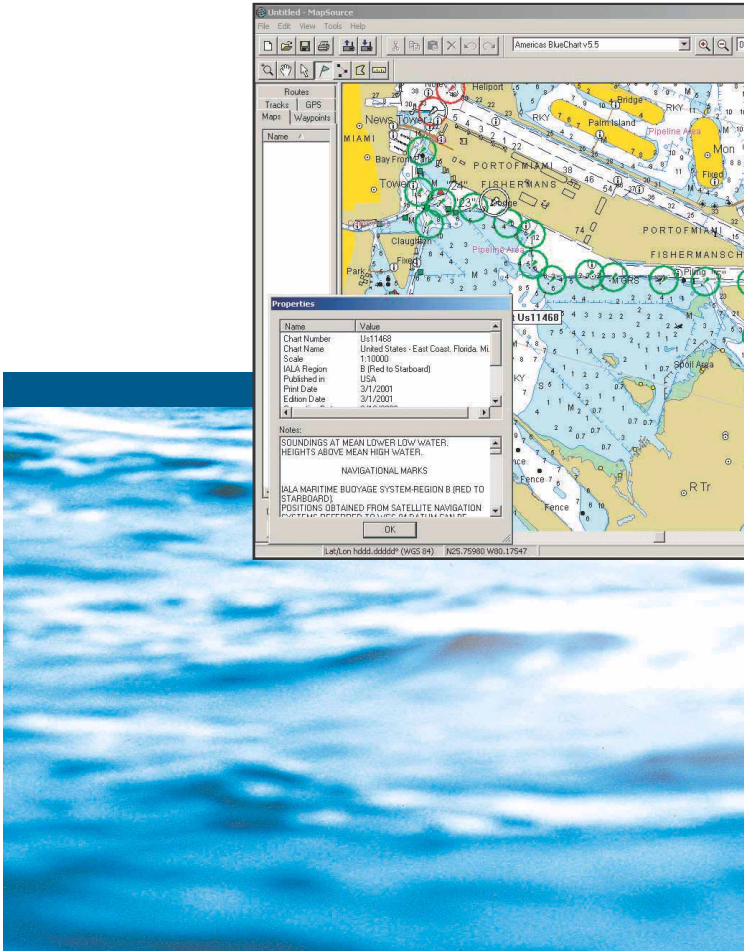
MapSource® CD-ROMs



Detailed maps for
your adventures on
land and sea

On the water

Garmin even offers detailed cartography for your boating and fishing pursuits. For offshore coverage, check out Garmin's exclusive BlueChart® cartography. BlueChart provides the detail of paper charts in convenient electronic form—preprogrammed data cards or CDs. The U.S. Recreational Lakes with Fishing Hot Spots® CD offers inland coverage that includes general road and lake detail throughout the U.S. The included Fishing Hot Spots data provides lake profiles, fishing tips and information for select lakes. There's even coverage for those who fish the land of 10,000 lakes with the Minnesota LakeMaster® product.

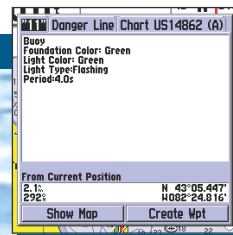
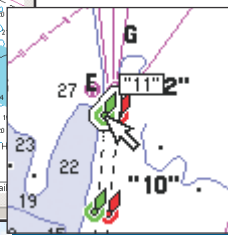
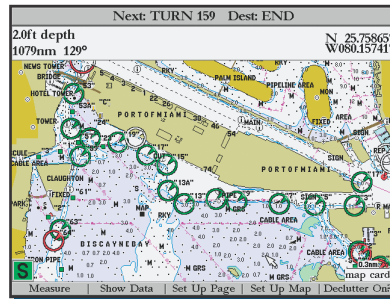
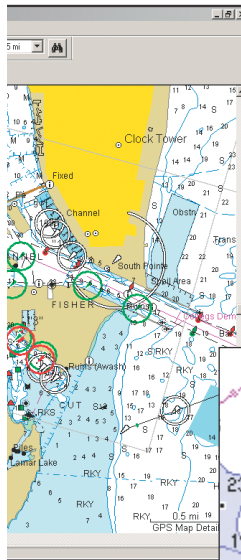




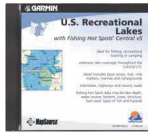
BlueChart®

BlueChart serves up the best offshore cartography around and works in seamless integration with a wide range of Garmin chartplotters. It even offers limited compatibility with handhelds such as the eTrex® Legend, eTrex Vista, Rino® 120/130, GPSMAP® 60C/CS, GPSMAP 76 series and iQue® series. Map areas are shaded like paper charts so you can identify intertidal zones, depth contours and more. BlueChart is available in three versions: Americas (North and South America), Atlantic (Europe and Africa) and Pacific (Asia, Australia and New Zealand).

- Shaded depth contours
- Intertidal zones
- Spot soundings
- Nav aids
- Port plans
- U.S. tide data
- Wrecks, restricted areas, anchorages



BlueChart is object-oriented, which means on all Garmin plotters, you can pan to an object on the map and instantly view information about that point.



U.S. Recreational Lakes with Fishing Hot Spots®

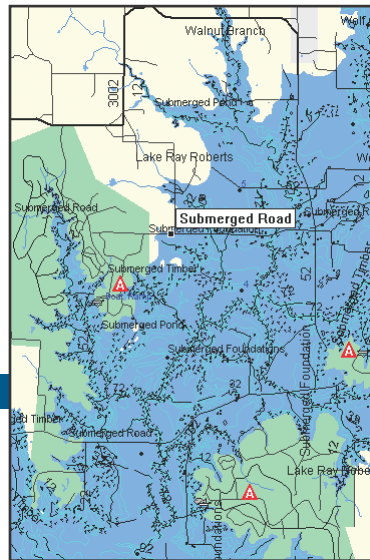
This inland cartography is ideal for fishing, recreational boating or camping. Road detail helps you navigate to the lake, and once you're there, you'll get shoreline detail, boat ramps and more. The Fishing Hot Spots data provides valuable fishing tips and information, as well as depth contours for select lakes. Available in CD form (no unlock required) or data cards containing Fishing Hot Spots detail only. Both forms are divided into three regions: East, Central and West. Compatible with most Garmin chartplotters; limited compatibility with eTrex® Legend, eTrex Vista, GPSMAP® 60C/CS, GPSMAP 76 series and Rino® 120/130.

- County and access roads
- Detailed lake maps
- Lake profiles
- Fishing tips & information

Minnesota LakeMaster®

Minnesota LakeMaster contains maps of 51 of the most popular Minnesota lakes in the highest detail available. The maps include high-definition, three-foot contours and underwater structure detail created from meticulous on-the-water surveys. Other map features include islands, reefs, points, bays, access points, marinas and more. Available on a single CD-ROM or a preprogrammed data card.

- Depth contours
- Structure
- Islands
- Marinas



Fishing Hot Spots detail provides lake profiles, fishing tips and more.

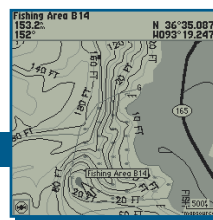
Facilities: Road, Fishing Hot Spots, Map

Facilities

Indian Point Use Area and Marina

Boat Ramp
 Drinking Water
 Restrooms
 Picnic Area
 Campground
 Marina

OK Create Mappt Show On Map



Fishing Area: Fishing Hot Spots, Map

Fishing Area B14

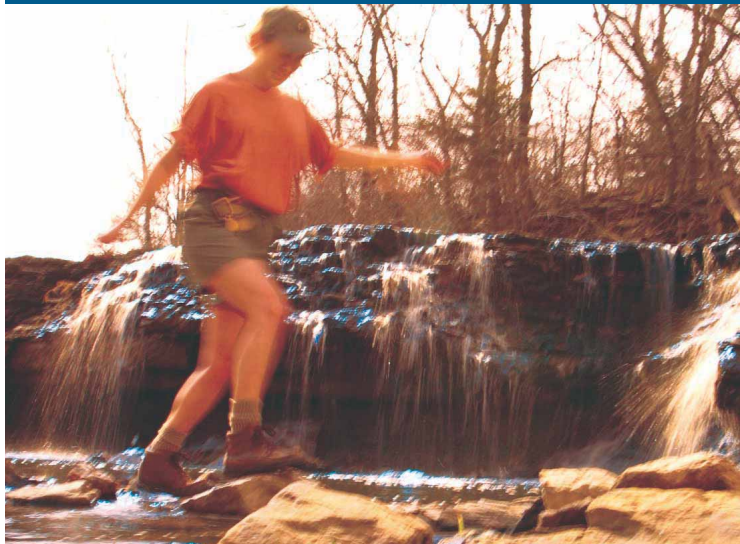
The saddle between the point and the island can be effectively fished with Carolina rigs during the summer. There are brush piles in 20 to 30 feet of water that also hold crappie and spotted bass.

OK Create Mappt Show On Map

On the trail

For those who prefer to experience the great outdoors on their own two feet, we offer TOPO CDs with detailed topographic maps. TOPO maps are ideal for outdoor adventurers who are into hiking, hunting, camping, climbing and skiing. Both versions are compatible with a wide range of Garmin receivers, including the eTrex® Legend, eTrex Vista, GPS V, GPSMAP® 60C/CS, GPSMAP 76 series, Rino® 120 and Rino 130.

The main difference between these two products is that TOPO 24K only covers the U.S. National Parks, while the regular TOPO has overall U.S. coverage.





TOPO

The TOPO series CDs provide topographic maps with terrain contours, elevation information, some roads, trails, summits and some bathymetric contours. These CDs are not locked, so you have access to all the coverage areas. Available in two versions: U.S. and Canada.

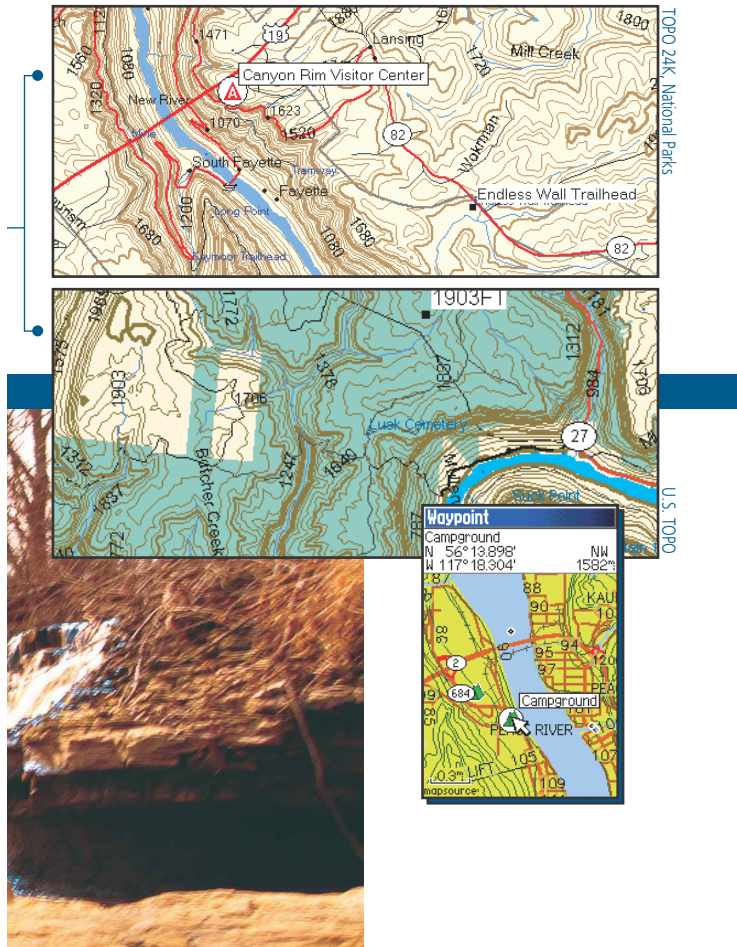
- Terrain contours
- Elevation information
- Roads & trails
- Summits
- Some bathymetric contours



US TOPO 24K, National Parks

This CD provides detailed coverage of U.S. national parks, national forests and some state parks. It also includes points of interest and park amenities. Maps are comparable to USGS 1:24,000 scale paper maps. Available for three regions: Western, Central and Eastern.

- Terrain contours
- Coverage of national parks
- Routable trails
- Summit elevations and peaks
- Vertical profile of trails and routes



Waypoint

| | |
|----------------|----------|
| Campground | |
| N 56° 13.898' | NW 1582m |
| W 117° 18.904' | |

0.3m LIFT
mapsource

MapSource® Compatibility

Use the following listing to help you pair up your Garmin unit with the recommended MapSource CD. Keep in mind that units may be compatible with multiple titles, but this information will help direct you to the CD that provides the kind of detail your adventures demand. You can also visit the Garmin Web site, www.garmin.com, for more help selecting the appropriate MapSource CD.

eTrex® Venture, GPS 72, GPS 76, Rino® 110

- Points of Interest – locations of services such as food & drink, lodging, banks

eTrex Legend, eTrex Vista, GPSMAP® 76/76S, Rino 120, Rino 130

- MetroGuide® — street-level maps with address lookup, points of interest

eTrex Legend, eTrex Vista, GPSMAP 60/60CS, GPSMAP 76 series, Rino 120, Rino 130

- TOPO (all versions) — map detail for hiking, camping, climbing, skiing
- U.S. Recreational Lakes with Fishing Hot Spots® — road and lake detail, fishing tips and information
- BlueChart® — offshore marine cartography with depth contours, port plans, intertidal zones

Geko™ 201, Geko 301, GPS 12, eTrex, eTrex Summit

- Trip & Waypoint Manager – transfers waypoints, routes and tracks between GPS and PC, no map downloads

cf Que™, GPS V, GPSMAP 60C/CS, GPSMAP 76C/CS, 276C, iQue® series

- City Select® – included with purchase (cf Que, GPS V and iQue only); street-level maps with auto routing, address lookup, points of interest

StreetPilot® III, 2610, 2650

- City Navigator™ – included with purchase; street-level maps with auto routing, address lookup, points of interest

GPSMAP 172C, 176/176C, 178C, 182/182C, 188/188C, 232, 238, 276C, 2006/2006C, 2010/2010C, 3006C/3010C

- BlueChart® – offshore detail
- U.S. Recreational Lakes with Fishing Hot Spots® – inland detail

Extreme mapping detail is just a click away

If you're looking for trails and terrain contours or nav aids and coastlines, you'll find the map detail you need on Garmin's complete line of MapSource® CD-ROMs. Through a simple connection to your PC, you can enhance the basemap on your compatible Garmin GPS. Just select the map areas of interest, and with the click of the mouse, the map detail quickly downloads to your GPS or to programmable data cards which then plug into your unit. When you're traveling to another area, you can download new maps to your unit or data card so you'll always have the best mapping detail wherever you go.



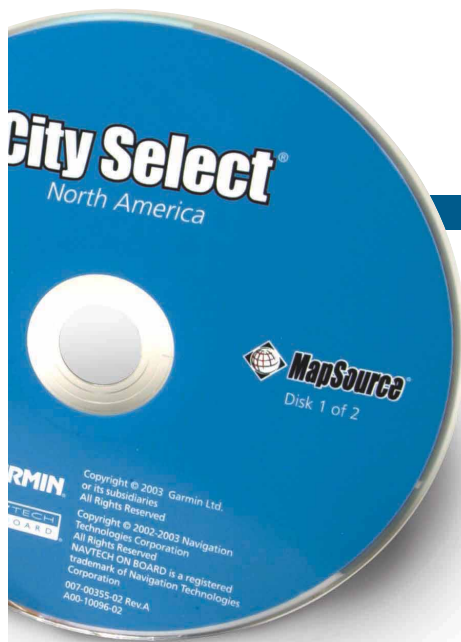
NAVTEQ
ON BOARD™

NAVTEQ ON BOARD is a registered trademark of Navigation Technologies Corporation.
Copyright © 2004 Navigation Technologies Corporation, All Rights Reserved.

Take a look at the MapSource titles available and choose the CD that provides the kind of map detail your adventures demand. Use our online map viewer program at www.garmin.com to see the map detail contained on each CD-ROM.

To run MapSource on your PC, your system must have these requirements:

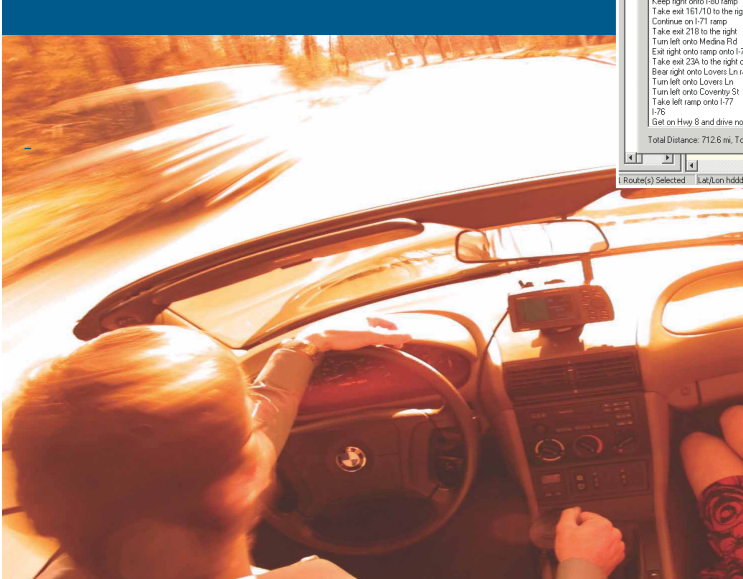
- Pentium processor
- Windows 98, Windows NT 4.0, Windows 2000, Windows XP or Windows ME
- At least 32 MB minimum RAM
- 300 MB free hard disk space (for compact installation)
- CD-ROM drive
- 256-color display adapter and monitor (24-bit color recommended)
- Mouse or other pointing device
- PC interface or USB interface cable
- Internet access recommended for certain MapSource titles

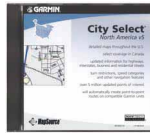


On the road

For those who navigate the urban jungle, MapSource offers titles with detailed street maps, address lookup and points of interest listings. With this kind of data downloaded to your compatible Garmin GPS, you can literally travel to a new city, look up your hotel, restaurants, attractions and other services and use your GPS to guide you there without ever stopping for directions. Both City Select® and MetroGuide® offer automatic route capability on the PC, which means you simply select a starting point and destination and MapSource calculates a route, which you can then download to your unit. City Select also offers auto routing directly on compatible GPS units.

Screen shows route being created across multiple states with dialog box providing detailed directions to destination.





City Select®

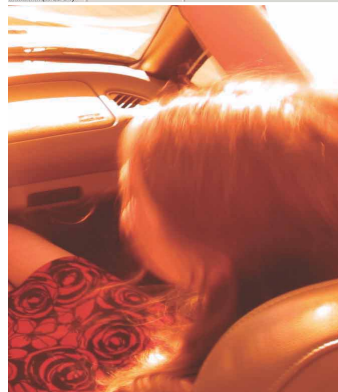
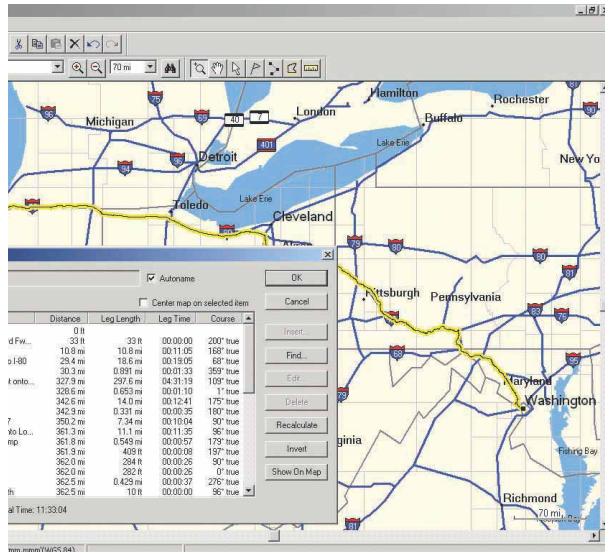
City Select provides detailed maps of major metro areas as well as rural coverage. The CD is included with the purchase of several Garmin units, including the GPS V and iQue® series. City Select is also recommended for use with the GPSMAP® 60C/60CS, 76C/76CS and 276C. It's available in three versions: North America, Europe and South Africa.

- Highways, interstates, business and residential streets
- Address lookup
- Turn restrictions and speed categories
- More than 5 million points of interest
- Automatic routing on the PC and compatible Garmin units

MetroGuide®

This CD offers similar coverage as City Select, including points of interest such as food and drink, lodging, hospitals and other services. The main difference is its compatibility with Garmin units that do not have automatic route capability, such as eTrex® Legend, eTrex Vista, GPSMAP 76/76S, GPSMAP 176, Rino® 120 and Rino 130. It's available in four versions: U.S.A., Europe, Canada and Australia.

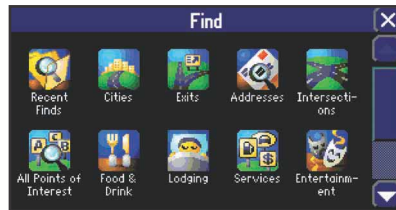
- Highways, interstates, business and residential streets
- Address lookup
- More than 5 million points of interest
- Automatic routing on the PC (Canadian version also offers turn-by-turn directions on compatible units)



download button—transfer data to your Garmin GPS

vector based—move cursor to a point on the map to view information

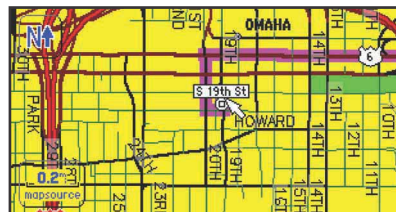
points of interest include schools, shopping and entertainment



Look up attractions and services.



View address and get route guidance.

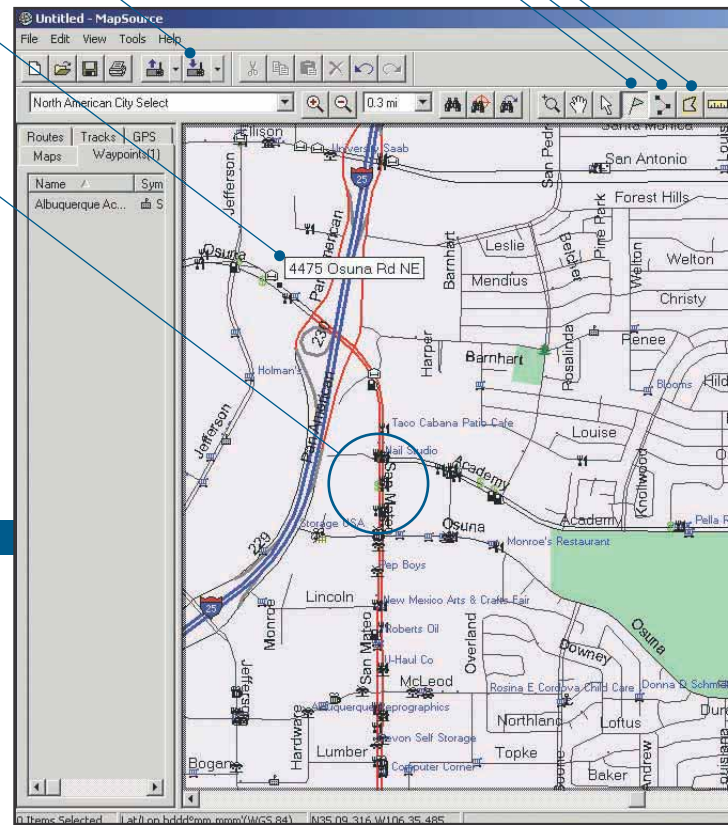


Map page showing MapSource detail.

map selection tool—click on the map areas you want to download to your GPS

route tool—create your own routes on the PC

waypoint tool—create waypoints and save to your Garmin GPS

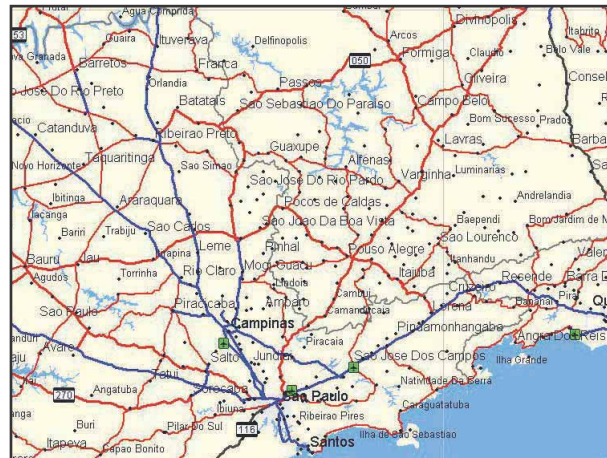




WorldMap

For travel outside North America, Europe, South Africa and Australia, take a look at the WorldMap CD, which provides basic worldwide maps. Use the trip and waypoint management function to create routes and waypoints for your trips and transfer them to your GPS. WorldMap is compatible with most Garmin GPS units and is generally recommended only if no other coverage is available for the area.

- Cities worldwide
- Political boundaries
- Coastline detail
- Major motorways





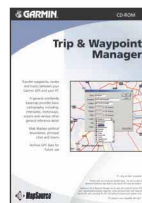
Points of Interest

This CD is designed for Garmin GPS units that do not have built-in road and street detail but do accept points of interest data. Once this data is downloaded to your unit, you can look up services and use your GPS to guide you there. Points of Interest is recommended for use with the eTrex Venture, GPS 72, GPS 76 and Rino 110.

- More than 1 million points of interest
- Cities worldwide
- Landmarks
- Marine nav aids



Once Points of Interest data is downloaded to your GPS, you can look up attractions and more.

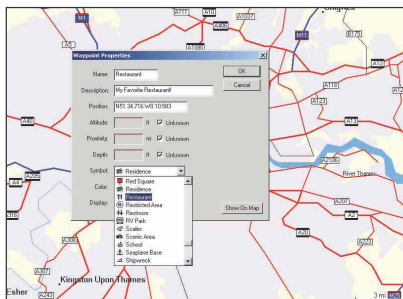


Trip & Waypoint Manager

This trip planning CD is designed for use with Garmin units that have no built-in map detail or city point database, such as the GPS 12, eTrex, eTrex Summit, Geko 201 and Geko 301.

With this simple, affordable CD, you get the benefit of being able to create waypoints and routes on your PC and then download them to your unit. You can also transfer waypoints, routes and tracks from your outing back to your PC for recall at a later date.

You will not be able to download map detail to any Garmin GPS using this product.



With a basic worldwide map as your background, you can create waypoints and routes on your PC screen and then download the points to your Garmin GPS.



Garmin International, Inc.
1200 East 151st Street
Olathe, Kansas 66062
phone: 913.397.8200
fax: 913.397.8282

www.garmin.com